

The smart locker solution for employees

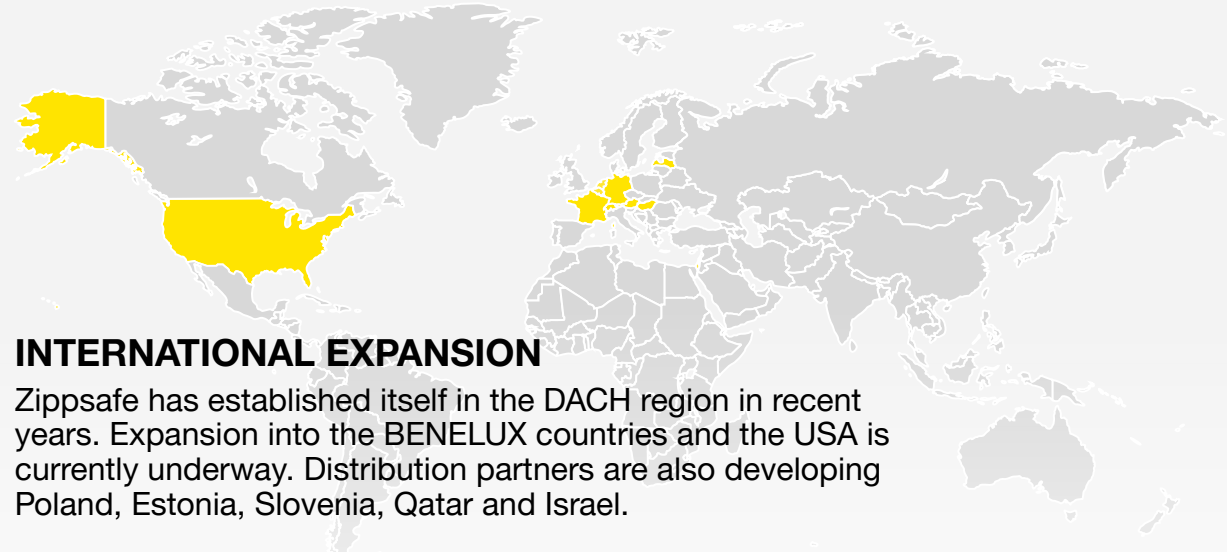
SPACE-EFFICIENT
USER-FRIENDLY
HYGIENIC
DIGITAL



A young company has taken on the goal of revolutionizing the way we store things and is on course for international expansion

FOUNDED IN 2017

David Ballagi and Carlo Loderer have known each other since childhood and started Zippsafe during their studies in mechanical engineering at ETH Zurich.



INTERNATIONAL EXPANSION

Zippsafe has established itself in the DACH region in recent years. Expansion into the BENELUX countries and the USA is currently underway. Distribution partners are also developing Poland, Estonia, Slovenia, Qatar and Israel.

THE TEAM IS GROWING

The 60+ employees in Zurich, Düsseldorf, Budapest & the USA are revolutionizing the way we store.



DESIGNED IN SWITZERLAND

The idea was born in the Swiss Alps. The headquarters are located near Zurich, and most of the production takes place in Budapest.



Employee locker rooms take up a lot of space, socio-demographic trends increasingly aggravate the space problem

SPACE-EFFICIENT USER-FRIENDLY HYGIENIC DIGITAL

SPACE PROBLEMS IN EMPLOYEE LOCKER ROOMS

AREA OF EMPLOYEE
LOCKER ROOMS

10 %

TIME PER DAY IN EMPLOYEE
LOCKER ROOMS

8 min

Employee locker rooms occupy up to 10% of the total usable area and are used on average for only 8min/day: 4 minutes at the beginning of a shift and 4 minutes at the end of a shift. This usage of space is highly inefficient.

DEMOGRAPHY

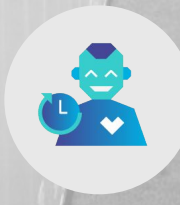
The growing world population leads to more potential jobs and less space

URBANIZATION

Urbanization leads to less space and higher prices per square meter amid dense construction

WORKING MODELS

With shift-based and part-time work, more workers must be integrated into existing buildings



Thanks to the space-saving properties of Zippsafe, space can be saved & transformed into value-added rooms

SPACE-EFFICIENT USER-FRIENDLY HYGIENIC DIGITAL

WHY SAVE SPACE?

With Zippsafe

485 m²

were made free!

CLASSIC
1'095 m² for
1'700 ppl.

ZIPPSAFE
610 m² for
1'700 ppl.

SPACE SAVING

Several rooms can be saved, which can lead to a reduction of renting cost

CAPACITY EXTENSION

An increase in personnel, and part time workers in the former building left the new planned area too small

ALTERNATIVE USAGE

Centralization of employee locker room, transformation from cost to profit center (treatment rooms, etc.)



University clinic in France, Realisation in 2023

The cost saving per square meter is significant. Usually, the payback period is only 2-3 years!

SPACE-EFFICIENT USER-FRIENDLY HYGIENIC DIGITAL

EFFICIENT SPACE MANAGEMENT

CONSTRUCTION COST

Every square meter of additional building volume costs money.

- CLASSICAL LOCKERS: 4,380,000 EUR for 1,095 m²
- **ZIPPSAFE: 2,440,000 EUR FOR 610 m²**

OPERATING COST

Less space results in lower expenses for insurance, cleaning, maintenance, etc.

- CLASSICAL LOCKERS: 438,000 EUR for 1,095 m²
- **WITH ZIPPSAFE: 244,000 EUR FOR 610 m²**

OPPORTUNITY COST

Depending on the location of the locker rooms, opportunity costs are particularly high and space can be more wisely used for storage, break rooms, etc...



Zippsafe's popularity stems from its user-friendly features

SPACE-EFFICIENT USER-FRIENDLY HYGIENIC DIGITAL

HANGER SYSTEM

Via the pull-out hanger system integrated in the locker bag, Zippsafe can be operated ergonomically & clothes can be hung up neatly.

LOCKER BAG

The flexible locker bags can easily accommodate large items such as motorcycle helmets and handbags.

SIDE POCKETS

The side compartments inside the bag provide enough storage space for fresh work clothes or personal items.

VENTILATION SYSTEM

Users appreciate the drying mode and the better air quality in the changing room.

SHOE COMPARTMENT

Shoes are stored separately from clothing in the shoe compartment under the bench. There is room for two pairs of shoes or one pair of boots.



CANTON HOSPITAL WINTERTHUR

SPACE-EFFICIENT USER-FRIENDLY HYGIENIC DIGITAL



CAPACITY

175 ZippSpace L systems
16 ZippSpace M systems



BEFORE ZIPPSAFE

775 square meters planned, impersonal solution as the only option with a lot of resistance



WITH ZIPPSAFE

775 square meters for 2,785 employees
A personal locker bag for everyone

The ZippSpace product line was developed in collaboration with customers and users. Functions such as the integrated shoe compartment or the effects pocket on the handle were developed based from feedback in Winterthur.

The installation has since been expanded to 191 systems or 2,785 units making it the largest in Switzerland.

Hygiene can be increased with Zippsafe in and around the closure pockets. Additionally, the cleaning effort is minimized

SPACE-EFFICIENT USER-FRIENDLY HYGIENIC DIGITAL



INCREASED HYGIENE

BLACK/WHITE/ GREY-SEPARATION

Two side compartments allow hygienic separation of fresh laundry and street clothes.

VENTILATION SYSTEM

Air moisture is minimized in the locker bag, which prevents exponential bacterial growth.

SMARTFABRIC

Thanks to antimicrobial and water-repellent Smartfabric, viruses and bacteria are eliminated, water pearls off and drying is supported.

ANTIMICROBIAL COATING

The hanger system, the separate shoe compartments and all the other interaction points have antimicrobial surfaces.

REDUCED CLEANING EFFORT

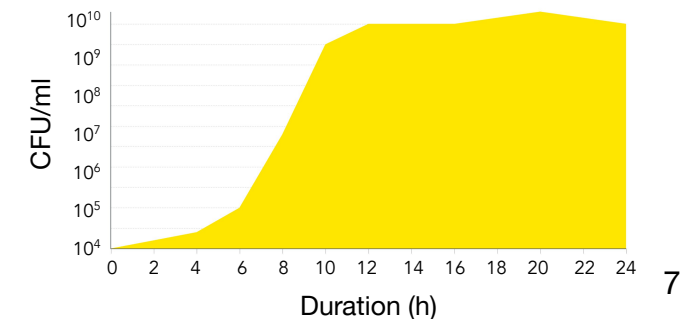
SIMPLE CLEANING OF BAGS

The locker bags can be cleaned by hand with soap and common disinfectants or by machine at 60 °C.

ORDER IN THE ROOM

In addition to easy replacement and cleaning of the locker bags, room cleaning is optimized. Shoes get their dedicated place and it can be wiped easily.

BACTERIAL GROWTH



It's time for the digital transformation, also in employee locker rooms

SPACE-EFFICIENT USER-FRIENDLY HYGIENIC DIGITAL

TRANSFORMATION OF EMPLOYEE LOCKER ROOMS



1920

Not only is the locker itself evolving, but also the **management of the lockers** is being **optimized and digitized**.



2020



FUTURE

ADVANTAGES OF THE ZIPPSAFE MANAGEMENT SYSTEM

END-TO-END CONNECTIVITY

- Delivered as a **plug-and-play solution**, to be integrated without involving partners
- Via **IOT technology**, Zippsafe can be integrated into the existing IT architecture and connect with access management systems thanks to an API

DIGITAL INTERFACE

- Assignment of locker bags via **a few clicks** - tedious key management is eliminated
- Simple handling **saves costs, time and nerves**

REMOTE MANAGEMENT

- Ability **to remotely control** the Zippsafe facility, turn systems on and off, and assign units
- Processes made more efficient, **communication between departments** simplified

With ZippManager, administration is digitized and optimized, an often underestimated benefit

SPACE-EFFICIENT USER-FRIENDLY HYGIENIC DIGITAL

ONLINE MANAGEMENT WITH ZIPPMANAGER

EFFICIENCY INCREASE

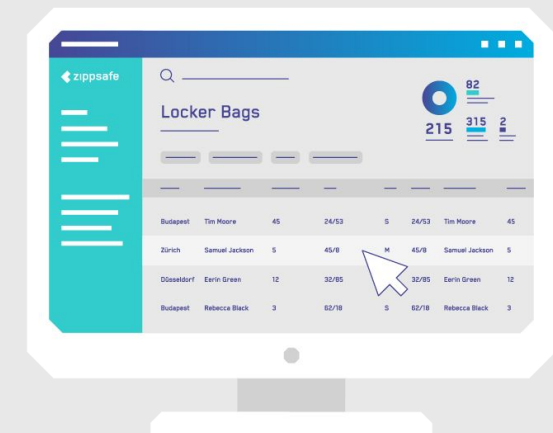
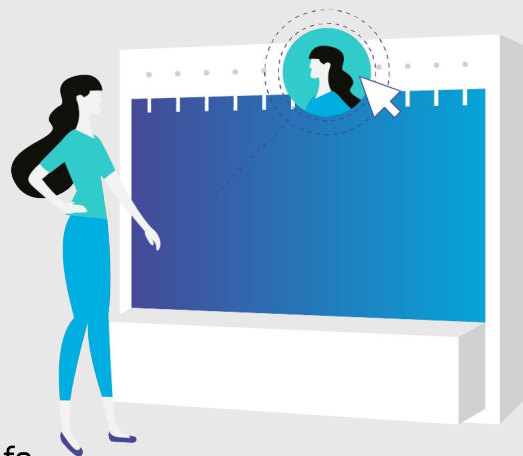
- Lower process costs in the allocation and management of locker rooms
- Optimized management prevents inefficient use of space
- *e.g. no breaking up of lockers*

PEACE OF MIND

- Less stress thanks to optimized and automated processes
- Minimization of errors and increased safety thanks to digital solution
- *e.g. information to cleaning automated*

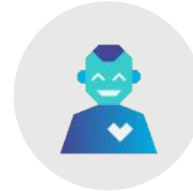
OVERVIEW

- Increased transparency of locker availability
- Administration via an intuitive and simple user interface
- *e.g. no tedious key management*



KARLSRUHE MUNICIPAL HOSPITAL

SPACE-EFFICIENT USER-FRIENDLY HYGIENIC DIGITAL



CAPACITY

22 ZippSpace Pro L systems with 15 locker bags &
36 ZippSpace Pro M systems with 10 locker bags



BEFORE ZIPPSAFE

Classic lockers with padlock, without digital
management



WITH ZIPPSAFE

Integration of existing access management solution
of Siemens and application of ZippManager to
allocate and manage ZippSpace solution

In addition to the enormous space savings, the hospital benefits from optimized digital management via the ZippSafe Management System. The ZippManager allows the locker bags to be managed easily and efficiently.

BEFORE



AFTER



ZippSpace was developed for healthcare and other high-end industries

CUSTOMER BASE



Feel free to contact us at any time - We are looking forward to it!

CONTACT

ZIPPSAFE AG

Bernstrasse 39
8952 Schlieren
Schweiz

+41 44 510 81 00
info@zippsafe.com

ZIPPSAFE GERMANY GMBH

Jacobistrasse 7
40211 Düsseldorf
Deutschland

+49 172 2059997
info@zippsafe.com

ZIPPSAFE HUNGARY KFT.

Aliz utca 4
1111 Budapest
Ungarn

+41 44 510 81 00
budapestoffice@zippsafe.com

ZIPPSAFE USA INC.

% New World Management 2125
Center Avenue Suite 507
Fort Lee, NJ 07024 - USA

+1 585-754-6530
info@zippsafe.com



